

2026

HOW WE  
**ST★ND**

Chandler Chamber's  
Guide to Legislative and  
Political Issues

# A Message from the Board Chair & President/CEO

---



**Andrea Marconi**  
2026 Board Chair  
Fennemore Craig

The Chandler Chamber of Commerce has been rooted in a tradition of advocacy dating back to its establishment in 1912, and has since been a consistent proponent for businesses throughout the East Valley. These initiatives have allowed the Chamber to engage with governmental institutions at the local, state, and federal levels to ensure proposed legislation meets the needs of Chandler's thriving commercial environment.

*How We Stand*, published annually by the Chamber's Public Policy Committee, offers elected officials and community leaders a detailed perspective on key legislative issues, demonstrating the unified stances taken by Chandler's business community on issues affecting the wide range of industries found in Chandler. Our document stands as a reflection of the thorough research and thoughtful input from Chandler business leaders designed to guide impactful policy creation and execution.



**Terri Kimble**  
President/CEO  
Chandler Chamber  
of Commerce

Collaboration has always been at the heart of Chandler's success, and it remains a responsibility we all share. Through our partnerships, policies become stronger reflections of our member's priorities. This is the Chamber's goal with *How We Stand*, to promote and advance legislation for our members that's responsive to the needs of Chandler's business community.

Our Chandler Chamber team takes pride in the research we do to inform our members of legislative issues impacting our businesses. We then organize collaborative discussions and roundtables with Chamber members and community leaders to form *How We Stand* so that it remains an accurate representation of our shared values.

We appreciate you taking the time to read the Chandler Chamber's 2026 *How We Stand* booklet. I'm proud of the agenda our team has created to provide members, elected officials, and community leaders with a clear understanding of the challenges faced by local businesses. We here at the Chamber value your role in enriching our community and promoting the development of Arizona's pro-business environment.

# We Are Award Winning

In 2025, the Chandler Chamber of Commerce received top honors from Arizona Chamber Executives (ACE), with President & CEO, Terri Kimble, named Industry Leader of the Year and our programming featuring our Business Retention & Expansion (BR&E) visits recognized as Outstanding Program of the Year.

President and CEO Terri Kimble was awarded “Leader of the Year” for the Chamber’s work in public policy regarding economic development by the Arizona Capitol Times. Each year, the Capitol Times recognizes men, women, and organizations that have contributed greatly to Arizona’s growth

The Chandler Chamber of Commerce was the proud recipient of the National Award of Excellence from the American Chamber of Commerce Executives (ACCE) for our *How We Stand* legislative agenda. This award is reflective of the commitment and the cooperation of our members, businesses, community leaders, and elected officials addressing the legislative issues that are critical to the business community.



The following staff were the primary architects of this document and its contents:

**Terri Kimble**  
President/CEO

**Carly Wakefield**  
Vice President of  
Workforce Development &  
Government Relations

**Grant Thompson**  
Public Policy & Government  
Relations Coordinator

**Shalista Anderson**  
Marketing Coordinator

**Mia Bell**  
Public Policy Intern  
ASU Undergraduate

**Interested in contributing to  
How We Stand this year?**

Share your points with us at:  
[info@chandlerchamber.com](mailto:info@chandlerchamber.com)

Book Design by:  
**Sonya Fraser**  
Graphic Design & Marketing Intern  
ASU Graduate

Presented by:



# Chandler Chamber of Commerce Public Policy & Government Relations Division

## Our Mission

To proactively engage and influence the outcome of public policy issues and the endorsement of pro-business candidates to sustain and further enhance the healthy business climate in the City of Chandler and Arizona.

## About Us

Located in the heart of the East Valley, the Chandler Chamber of Commerce represents over 1,700 member businesses and more than 172,000 employees, all dedicated to fostering a thriving economic landscape.

At the helm is a passionate Board of Directors, committed to implementing a strategic annual plan that champions influential public policy. They understand that these policies can significantly impact the community, and they work tirelessly to cultivate an environment ripe for success, not just in Chandler, but beyond.

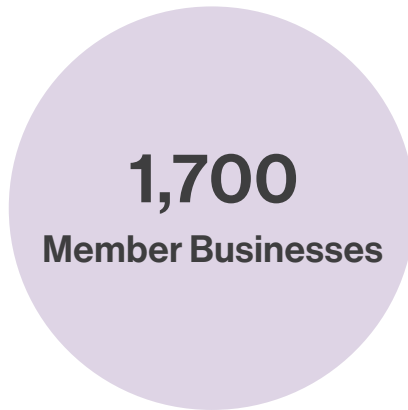
Chandler Chamber of Commerce  
**101 W Commonwealth Ave.  
Chandler, AZ 85225**

Email:  
**info@chandlerchamber.com**

Phone:  
**(480)963-4571**

Website:  
**Chandlerchamber.com**

*All information provided in this document is current as of December 2025.*



## Policy Development

The Good Government Committee consists of devoted business leaders that make recommendations to the Board of Directors to support business friendly candidates during an election cycle, helping guarantee these elected officials craft pro-business policies.

The Chamber develops its stance on a wide-range of policy areas and provides elected officials valuable insights to help inform their vote. Our monthly Policy Impact Series, as well as our industry roundtables, serve as a platform for discussion, fostering a proactive approach to local governance from the Chamber and our members. As a result, we are able to strengthen the entire business ecosystem and ensure Chandler remains a vibrant hub for businesses to thrive.



Scan here to visit the Chandler Chamber's website



Scan here to view our Year in Review

# Table of Contents

<b>Economic Vitality &amp; Expansion</b>	<b>6</b>
<b>Education (P-20) Workforce</b>	<b>10</b>
<b>Efficient &amp; Effective Government</b>	<b>18</b>
<b>Energy, Water, Utilities, and Environment</b>	<b>24</b>
<b>Healthcare &amp; Affordable Insurance</b>	<b>28</b>
<b>Immigration</b>	<b>32</b>
<b>Infrastructure</b>	<b>34</b>
<b>Legal &amp; Tax Policy</b>	<b>42</b>
<b>Chandler Chamber 2026 Board of Directors</b>	<b>48</b>
<b>Public School Districts</b>	<b>50</b>
<b>Chandler Legislative Districts</b>	<b>52</b>
<b>State of Arizona Legislature</b>	<b>53</b>
<b>Elected Officials</b>	<b>54</b>
<b>Chandler Elected Officials</b>	<b>56</b>
<b>How to Vote in Arizona</b>	<b>57</b>
<b>Contributors</b>	<b>58</b>

# Economic Vitality & Expansion

**Guiding Principle:** The Chandler Chamber of Commerce aims to attract and develop businesses in diverse industry sectors. The Chamber supports collaboration with all levels of government to support Arizona's economic vitality.

**Key Issues:**

**A.** Advocate for free trade policies to promote Chandler's and Arizona's competitive position in the global market.

**Footnotes:**

---

*1. Business Retention and Expansion (BR&E) is an economic development strategy of proactively connecting with existing businesses to understand and respond to needs.*

## Position Statements

Local

State

Federal

Actively encourage businesses to choose the Southwest region for their headquarters, driving long-term economic growth and regional success.



Support the responsible use of incentives to maintain and expand long-term economic development opportunities that promote Arizona's competitive position, and further develop Chandler as a global hub for innovative, international and capital intensive industries.



Strengthen Arizona's economy through public-private partnerships that align with the City's mission for economic vitality.



Support the Chandler Chamber of Commerce and the City of Chandler's entrepreneurial programs and the Business Retention and Expansion<sup>1</sup> (BR&E) program that expand innovative business enterprises, while utilizing state and federal resources.



Support access to comprehensive educational resources, small business development programs, and guidance from the business location team to navigate the procurement process effectively.



Oppose city-wide minimum wage and workplace benefit policies above state-wide minimums.



## Economic Vitality & Expansion

**Guiding Principle:** The Chandler Chamber of Commerce aims to attract and develop businesses in diverse industry sectors. The Chamber supports collaboration with all levels of government to support Arizona's economic vitality.

### Key Issues:

**A.** Advocate for free trade policies to promote Chandler's and Arizona's competitive position in the global market.

---

### Footnotes:

*2. The Export-Import Bank is a federal export credit agency, which promotes free trade policies and financing solutions for U.S. companies to compete globally. The City of Chandler is a member of EXIM's Regional Export Promotion Program, a partnership designed to expand export opportunities for businesses in our area.*

*3. Areas within a country where goods can be stored, processed, and manufactured without usual customs duties and taxes.*

## Position Statements

Local

State

Federal

Support continued efforts to expand Arizona's international trade and investment offices to increase economic collaboration and foreign direct investment, including the continuation of the Export-Import Bank of the United States (EX-IM)<sup>2</sup> and specialty zoning.



Support creative and income-driven solutions to provide sustainable and attainable workforce housing that is geographically equitable.



Support innovative solutions to revitalize or repurpose commercial real estate in a public-private partnership.



Support the creation of reasonable special economic redevelopment zones, opportunity zones, and duty-free/international trade zones<sup>3</sup> to encourage the attraction of new and existing businesses.



Maintain strong collaboration between the Chandler Chamber of Commerce, the City of Chandler, Chandler-Gilbert Community College, and the Chandler Unified School District to foster regional growth and development.



## Education(P-20) & Workforce

**Guiding Principle:** The Chandler Chamber of Commerce supports a globally competitive education system that produces college and career ready graduates. The Chamber supports the development of a labor environment that is globally competitive and meets the unique needs of Arizona employers.

### Key Issues:

- A.** Ensure equal, equitable, and accessible education<sup>1</sup>.
  - B.** Preserve the ability for businesses to manage their workplace and workforce without undue government overreach.
  - C.** Maintain Arizona’s status as a “right-to-work” and “employment-at-will” state.
  - D.** Support legislation and programs that seek to make the education-to-workforce pathway accessible, such as apprenticeships, internships, upskilling, and retraining programs.
  - E.** Support bonds and overrides that increase funding for K-20 school districts.
- 

### Footnotes:

*1. Equality means that everyone is treated the same way, regardless of their differences.*

*2. World class education system includes; curriculum that focuses on reading, writing, financial and economic literacy, civics, history, entrepreneurship, research methodology, critical thinking, business education, and STEAM (Science, Technology, Engineering, Arts, and Mathematics) to prepare students to enter the workforce.*

## Position Statements

Local

State

Federal

Support a high-quality, competitive education system<sup>2</sup> that is stable, equitable, and recognizes excellence across both public and private schools.



Support reform of the Aggregate Expenditure Limit for public education to ensure schools have the authority to access and spend legislative appropriations.



Support student mental and physical health or “whole student” care.



Support equitable funding for community colleges and universities, including strategic research investments.



Support innovative programs that increase equitable access to and integration of one-to-one technology to improve classroom instruction through interactive, data-driven, and student-centered teaching strategies.



Support policies that require trained and qualified proctors for mandatory student performance evaluations in district, charter, private and online schools as well as colleges, and universities, and placement tests to further protect the integrity of the evaluation.



## Education(P-20) & Workforce

**Guiding Principle:** The Chandler Chamber of Commerce supports a globally competitive education system that produces college and career ready graduates. The Chamber supports the development of a labor environment that is globally competitive and meets the unique needs of Arizona employers.

### Key Issues:

- A.** Ensure equal, equitable, and accessible education.
- B.** Preserve the ability for businesses to manage their workplace and workforce without undue government overreach.
- C.** Maintain Arizona’s status as a “right-to-work” and “employment-at-will” state.
- D.** Support legislation and programs that seek to make the education-to-workforce pathway accessible, such as apprenticeships, internships, upskilling, and retraining programs.
- E.** Support bonds and overrides that increase funding for K-20 school districts.

### Footnotes:

---

*3. P-20 refers to education beginning from the “early years of education through college and career.”*

*4. The New Economy Initiative aims to create 40,000 new jobs by 2041, increase economic output to \$6.9 billion by 2032, and double the state’s investment in return, much of which can and should be generated within the space ecosystem.*

*5. Arizona’s 50/50 Resident Tuition Model is designed to prevent tuition increases for resident students and split the cost of education between the students and the state.*

## Position Statements

Local

State

Federal

Advocate for sustainable financial investments and simplification of the P-20<sup>3</sup> education and higher education programs, including the New Economy Initiative<sup>4</sup>.



Oppose OSHA and other government entities unilaterally expanding the definition of a “safe work environment.”



Support legislation that clearly defines the burden of proof on employers for wage and entitled time off disputes.



Support responsible legislative and administrative reforms that ensure the effectiveness of the Arizona unemployment insurance program.



Support programs that decrease the regulatory costs of medical care and workers’ compensation for employers.



Support public funding assistance for students to reduce education debt, including Arizona’s 50/50 Resident Tuition model<sup>5</sup> in combination with an increase in debt education.



Support the reduction of regulatory burdens on trade and technical businesses in offering apprenticeship programs.



## Education(P-20) & Workforce

**Guiding Principle:** The Chandler Chamber of Commerce supports a globally competitive education system that produces college and career ready graduates. The Chamber supports the development of a labor environment that is globally competitive and meets the unique needs of Arizona employers.

### Key Issues:

**A.** Ensure equal, equitable, and accessible education.

**B.** Preserve the ability for businesses to manage their workplace and workforce without undue government overreach.

**C.** Maintain Arizona’s status as a “right-to-work” and “employment-at-will” state.

**D.** Support legislation and programs that seek to make the education-to-workforce pathway accessible, such as apprenticeships, internships, upskilling, and retraining programs.

**E.** Support bonds and overrides that increase funding for K-20 school districts.

### Footnotes:

---

*6. Education Forward Arizona's Progress Meter is a non-partisan source of information about where we stand as a state on key education metrics.*

*7. Non-discrimination statutes and ordinances prevent discriminatory practices based on race, color, ethnicity, national origin, age, disability, religion, sex, sexual orientation, gender identity, veteran status, marital status or familial status. These measures align with Diversity, Equity, and Inclusion (DEI) principles by promoting equal treatment and opportunities for all individuals.*

## Position Statements

Local

State

Federal

Support metrics<sup>6</sup> that evaluate widely-accepted education indicators to measure Arizona's progress in education from early childhood through college and career.



Advocate for policies that promote diversity, equity, and inclusion<sup>7</sup>.



Support incentives to hire persons' with disabilities within the workplace.



Advocate for school choice policies that are balanced with fair and accountable standards.



Support the modernization of Arizona's P-20<sup>8</sup> funding system that will address critical issues<sup>9</sup>.



Support efforts to expand access to affordable and quality early childhood education and childcare.



*8. P-20 longitudinal data systems are state-level educational databases in the United States designed "to capture, analyze, and use student data from preschool to high school, college, and the workforce."*

*9. Critical issues include: teacher shortages; school construction; facility maintenance; student achievement, graduate rates; dropout rates, student testing; reading levels; student attendance tracking system; Career and Technical Education (CTE).*

## Education(P-20) & Workforce

**Guiding Principle:** The Chandler Chamber of Commerce supports a globally competitive education system that produces college and career ready graduates. The Chamber supports the development of a labor environment that is globally competitive and meets the unique needs of Arizona employers.

### Key Issues:

**A.** Ensure equal, equitable, and accessible education.

**B.** Preserve the ability for businesses to manage their workplace and workforce without undue government overreach.

**C.** Maintain Arizona’s status as a “right-to-work” and “employment-at-will” state.

**D.** Support legislation and programs that seek to make the education-to-workforce pathway accessible, such as apprenticeships, internships, upskilling, and retraining programs.

**E.** Support bonds and overrides that increase funding for K-20 school districts.

### Footnotes:

10. *Achieve60AZ is a statewide initiative aimed at increasing the number of working adults in Arizona with a post-secondary degree or certificate to 60% by 2030. The initiative is founded in confidence that a well-educated workforce is crucial for enhancing Arizona’s economic competitiveness and promoting individual success.*

11. *Cross-delivery models emphasize a variety of struggles and gaps for student education by adapting learning around student needs. By developing a variety of platforms, such as hybrid and online learning or community institutional partnerships, cross-delivery increases access and equity of quality education for at-risk students.*

## Position Statements

Local

State

Federal

Support the Achieve60AZ<sup>10</sup> program and other statewide attainment goals that address Arizona's workforce shortage.



Support greater equity in cross-delivery models<sup>11</sup>, including student transportation, and accommodations for special needs students.



Support the inclusion of key competencies in instruction<sup>12</sup>.



Support reform of the Fair Wages & Healthy Families Act<sup>13</sup> that eases the burden on businesses for the paid medical leave requirement.



Support common-sense regulation<sup>14</sup> in the aviation maintenance, repair, and overhaul industry.



Support opportunities, programs and policies to assist veterans' transition into civilian life and the workplace.



*12. Key competencies, or soft skills, include critical thinking, teamwork, work ethic, and communication.*

*13. The Fair Wages & Healthy Families Act, formerly ballot initiative Proposition 206, was passed in 2016 and requires a yearly raise in the minimum wage and paid sick-time minimum requirements, based on increases in the cost of living.*

*14. Common-sense regulation is risk-based, less prescriptive, and responsive to business realities.*

## Efficient & Effective Government

**Guiding Principle:** The Chandler Chamber of Commerce expects city, state, and federal policy-making decisions and budget appropriations to be made by elected officials.

### Key Issues:

- A.** Support transparency and accountability at all levels of government.
  - B.** Support modification of the voter initiative process by raising accountability and transparency requirements for ballot initiative campaign management and signature collectors.
  - C.** Support policies that reduce federal & state overreach and empower strong local control.
- 

### Footnotes:

*1. Proposition 105, or the Voter Protection Act, amended the Arizona Constitution relating to initiative and referendum measures; prohibits legislative repeals; requires three-fourths vote to amend measures, to supersede measure, or to transfer funds designated by the measures, and only if each furthers the purpose of the measures.*

*2. Entitlement programs refer to government initiatives that provide individuals with financial benefits, goods, or services based on established eligibility criteria. These programs are often mandated by law, meaning that the government is obligated to provide benefits to all individuals who meet the qualifications. Common examples of entitlement programs include Social Security, Medicare, Medicaid, and unemployment insurance.*

## Position Statements

Local

State

Federal

Support the regular review and referral of voter-approved initiatives and referendums every ten years.



Support policy and budget appropriations made by elected officials, not through ballot measures, executive orders, or multi-state coalitions.



Support reforms to the Voter Protection Act<sup>1</sup> that would allow two-thirds of the legislature, rather than three-fourths, to change a ballot measure without the need to further the purpose.



Support increasing the terms for State Senators and House Representatives from two to four years with staggered elections.



Support the formation of a City Charter Review Committee composed of citizens and business representatives to ensure congruence between laws and city needs, when needed.



Oppose City Charter amendments that alter the 2 four-year term limits for mayor and council.



Support regular unilateral reviews of state elected officials' compensation to reflect their responsibilities and time commitments.



## Efficient & Effective Government

**Guiding Principle:** The Chandler Chamber of Commerce expects city, state, and federal policy-making decisions and budget appropriations to be made by elected officials.

**Key Issues:**

- A.** Support transparency and accountability at all levels of government.
  
- B.** Support modification of the voter initiative process by raising accountability and transparency requirements for ballot initiative campaign management and signature collectors.
  
- C.** Support policies that reduce federal & state overreach and empower strong local control.

## Position Statements

Local

State

Federal

Support creation of City Council districts to ensure fair representation for all areas of Chandler and their business communities.



Support effective communication between government departments and entities' modernization of service delivery to businesses, including cost-effective computer system upgrades.



Support policies that balance revenue expenditures and maintain compliance on constitutionally-mandated spending requirements.



Prioritize transparency in public-private partnerships to improve efficiency and ensure proper stewardship of taxpayer funds.



Support correctional system reforms that provide programs and education in an effort to reduce recidivism and improve the reintegration of those leaving the prison system.



Support the continued reduction in business property taxes to assist in economic growth and vitality.



## Efficient & Effective Government

**Guiding Principle:** The Chandler Chamber of Commerce expects city, state, and federal policy-making decisions and budget appropriations to be made by elected officials.

**Key Issues:**

- A.** Support transparency and accountability at all levels of government.
  
- B.** Support modification of the voter initiative process by raising accountability and transparency requirements for ballot initiative campaign management and signature collectors.
  
- C.** Support policies that reduce federal & state overreach and empower strong local control.

**Footnotes:**

---

*3. Municipal bond ratings perform the isolated function of credit risk evaluation. The City of Chandler maintains a AAA bond rating, the highest possible rating from all three rating agencies (Moody's Investor Services, S&P Global, and Fitch Ratings).*

## Position Statements

Local

State

Federal

Support reforms to city and state pensions that create solvency within the system and do not harm taxpayers.



Support the dedication to maintaining a strong credit rating<sup>3</sup>, and efforts to educate residents on the economic factors that can affect the rating.



Support the implementation of a bipartisan committee that holds elected officials accountable, to ensure that they meet the ethical standards outlined in their offices.



Assist Arizona's congressional delegation in strengthening the defense industry and expanding government contracting opportunities.



Support review of the Governor's Emergency Powers by the State Legislature to align the will of the voters.



# Energy, Water, Utilities, and Environment

**Guiding Principle:** The Chandler Chamber of Commerce supports safe, affordable, reliable, and resilient water and utility services. The Chamber supports environmental policies that protect our natural resources, are sensitive to Arizona’s unique needs, and do not place an undue burden on businesses.

**Key Issues:**

**A.** Responsible and sustainable water policy.

**B.** Promote sustainability in resource management, generation transmission, and distribution.

**C.** Continue to advance and modernize Arizona's diverse energy infrastructure to support long-term reliability, sustainability, and economic growth.

**Footnotes:**

---

*1. The Drought Contingency Plan is a set of agreements designed to protect the Colorado River system through reductions and increased conservation. As part of the Lower Basin DCP, Arizona works in collaboration with California, Nevada, the federal government, and Mexico in the negotiation and implementation of water-saving measures.*

*2. The City of Chandler has committed to securing a “diversified water supply” and has implemented water conservation programs and strategies to combat drought conditions. In response to drier seasons, Chandler and local utilities have promoted innovative storage methods and infrastructure as well as improved water recovery methods. The State of Arizona has promoted sustainable water for its river systems, reservoirs, and groundwater systems. Through Annual Water Use Reports and System Water Plans, Arizona is continuously evaluating vulnerable areas across the state and developing comprehensive conservation methods for water.*

## Position Statements

Local

State

Federal

Support state primacy in setting reasonable water, energy, and air quality policy that provides practical options for businesses.



Support energy policies that encourage the continued development and maintenance of statewide energy infrastructure such as generation, transmission and distribution facilities; ensuring a safe, affordable, and reliable energy supply.



Support evidence-based legislation and cohesive regulatory policy that improves Arizona's sustainable infrastructure.



Support reliable, innovative, and technological strategies for acquiring, storing, conserving, and reusing water, including Arizona's Drought Contingency Plan<sup>1</sup>, the City of Chandler's water management plan<sup>2</sup>, Arizona's Assured Water Supply programs, and the Verde Reservoirs Sediment Mitigation Project and all water expansion projects.



Support research and development for natural gas, hydrogen, nuclear, and battery technologies for energy independence.



Support legislation to increase fund allocation for forest fire prevention services over fire suppression.



# Energy, Water, Utilities, and Environment

**Guiding Principle:** The Chandler Chamber of Commerce supports safe, affordable, reliable, and resilient water and utility services. The Chamber supports environmental policies that protect our natural resources, are sensitive to Arizona's unique needs, and do not place an undue burden on businesses.

**Key Issues:**

**A.** Responsible and sustainable water policy.

**B.** Promote sustainability in resource management, generation transmission, and distribution.

**C.** Continue to advance and modernize Arizona's diverse energy infrastructure to support long-term reliability, sustainability, and economic growth.

**Footnotes:**

---

3. A major source has actual or potential emissions at or above the major source threshold for any "air pollutant."

## Position Statements

Local

State

Federal

Support policies and incentives that advance the implementation of cost-effective green initiatives and environmental protections while preserving energy choice options for businesses and consumers.



Support policies that allow major sources<sup>3</sup> to secure air quality permits to locate or expand operations for business attraction and retention, while ensuring environmental quality.



Support Arizona in the continued revisions of the State Implementation Plan (SIP) in response to federal carbon emission reduction requirements under the Clean Air Act.



Support increased oversight and assurances that developers can maintain a 100-year assured water supply for new developments.



Support efforts to increase advanced manufacturing capacity and supply chain improvements.



Support Water Infrastructure Finance Authority (WIFA) to ensure a transparent process is in place for the investment of state and federal funds in projects aimed at augmentation, conservation, and reuse of water supplies.



## Healthcare & Affordable Insurance

**Guiding Principle:** The Chandler Chamber of Commerce recognizes the positive economic impact of the healthcare sector through high-wage and high-skill jobs. The Chamber supports innovative solutions that increase affordability and improve patient outcomes.

### Key Issues:

**A.** Encourage accessible and affordable healthcare & insurance for small businesses.

**B.** Oppose health insurance coverage mandates that negatively impact a business's ability to operate.

**C.** Promote healthcare workforce policies that address the industry shortages and build a high-quality health professions pipeline that focuses on training, retention, and recruitment.

---

### Footnotes:

*1. The J-1 Visa program allows for foreign nurses and physicians to practice in medically-underserved communities within the United States without fears of returning to their home residence.*

*2. Refers to policies and incentives meant to support the health and well-being of employees.*

*3. Accountable Care Organizations are groups of doctors, hospitals, and other health care providers who come together voluntarily to give coordinated, high-quality care to their patients, with the goal of minimizing duplication of services.*

## Position Statements

Local

State

Federal

Support an environment that attracts capital investments in human resources and innovative technology to address provider shortages and improve patient outcomes.



Support efforts to expand and maintain a strong medical workforce through the J-1 Visa program<sup>1</sup>, continued funding of high-quality medical education, specifically residency programs, and incentives for teaching programs in hospitals.



Support the positive effects of workplace wellness<sup>2</sup> and provide tax-favored status to programs aimed at keeping employees healthy.



Support continued policies and innovations in telehealth and artificial intelligence that increase accessibility and equity of patient care.



Support Accountable Care Organizations (ACOs)<sup>3</sup> and their efforts to provide improved quality of care for Medicare patients.



Support the creation of a system that would help streamline the healthcare insurance process between small businesses and healthcare vendors.



## Healthcare & Affordable Insurance

**Guiding Principle:** The Chandler Chamber of Commerce recognizes the positive economic impact of the healthcare sector through high-wage and high-skill jobs. The Chamber supports innovative solutions that increase affordability and improve patient outcomes.

### Key Issues:

**A.** Encourage accessible and affordable healthcare & insurance for small businesses.

**B.** Oppose health insurance coverage mandates that negatively impact a business's ability to operate.

**C.** Promote healthcare workforce policies that address the industry shortages and build a high-quality health professions pipeline that focuses on training, retention, and recruitment.

### Footnotes:

---

*4. Provisions such as the removal of a limited plan option that allowed employers to provide employees with low-cost healthcare, healthcare that they are now unable to provide due to higher costs.*

*5. The state has implemented several changes over the last five years including new mandated reporting for apparent overdoses, deaths, and addiction, increased regulation on prescription and licensing, and new training for law enforcement for the administering of life-saving medication for overdose incidents.*

*6. Professional development opportunities include clinical rotations, accessible housing, internships, and hands-on training, to fortify workforce readiness and magnify the healthcare talent pipeline.*

## Position Statements

Local

State

Federal

Support greater transparency for patients in both public and private health insurance by improving communication and collaboration among insurers, vendors, medical providers, patients, regarding medical billing and collection practices.



Support reforms of the Patient Protection and Affordable Care Act<sup>4</sup>, which has resulted in increased regulation, healthcare expenses, and taxes for employers and employees.



Support legislation that provides small businesses the option for pharmaceutical benefits to be unbundled from health insurance coverage, allowing employees to source lower-cost pharmaceutical benefits from third-party providers.



Support efforts to reduce and combat poison and substance abuse emergencies and promote the Arizona model<sup>5</sup> at the federal level.



Support legislation and efforts to strengthen Arizona's Behavioral Health System, such as destigmatization efforts, improved suicide prevention, mental and behavioral health treatment programs for all populations, and improved partnerships and coordination with the public and private sectors.



Support policies and initiatives that guarantee equitable access to all professional development opportunities<sup>6</sup> within the healthcare sector.



# Immigration

**Guiding Principle:** The Chandler Chamber of Commerce supports comprehensive federal immigration reform that is responsible, stimulates the economy, aids law enforcement agencies, and creates jobs. The Chamber supports reform that improves enforcement and protects the border, while facilitating the flow of trade and recreational travel.

## Key Issues:

**A.** Protect and advocate for business-friendly immigration and worker programs.

**B.** Promote comprehensive federal immigration reform that encourages economic growth.

**C.** Support efficient pathways to documentation, including residency and naturalization.

## Footnotes:

---

1. "Skilled workers" are individuals whose jobs require a minimum of two years training or experience, not of a temporary or seasonal nature. The skilled worker must meet the educational, training, or experience requirements of the job opportunity.

## Position Statements

Local

State

Federal

Support policies that help manage our borders and respond to the labor needs of the economy through employment-based immigration for skilled workers<sup>1</sup> and the labor force.



Support best practices and education for all stakeholders in the immigration process including immigrant's right to due process.



Support policies that increase access to study programs, both financial and administrative, for international students and undocumented immigrants.



Support federal reimbursement for states that incur increased costs of education, health care, and incarceration due to undocumented immigrants in the country.



Support policies that prohibit discriminatory wage practices and unjust working conditions for all migrant workers relative to their occupational peers.



Support cost-effective, humane and innovative technology solutions to protect our borders and human rights.



Support pro-business immigration and hiring practices.



# Infrastructure

**Guiding Principle:** The Chandler Chamber of Commerce supports a transportation system that promotes economic growth and enhances quality of life. The Chamber advocates for economic development that encourages entrepreneurship, business attraction, retention, and expansion with an emphasis on local control.

## Key Issues:

- A.** Encourage innovative transportation solutions that strengthen local and regional infrastructure.
- B.** Support diverse funding sources at all levels.
- C.** Support local decision-making for zoning and land use that aligns with Chandler's mission, and encourages modernization, transparency, and community involvement.
- D.** Promote the continued development of cyber security and intellectual property protections to prepare for and defend against evolving threats.

## Footnotes:

---

*1. The Infrastructure Investment and Jobs Act authorizes funds for transportation projects such as roads, public transportation, water infrastructure, broadband, and other major projects.*

*2. Private activity bonds are securities issued by or on behalf of a local government to provide debt financing for projects used most often by a private user. Private activity bond financing normally results in reducing financing costs since interest on the bonds is not subject to federal income taxes.*

## Position Statements

Local

State

Federal

Support increased appropriations of state and federal transportation dollars, based on growth and development needs and fund mandates from the Infrastructure Investment and Jobs Act<sup>1</sup>.



Support a flexible, modernized, long-term transportation infrastructure system that is appropriately funded and encourages public-private partnerships such as IDA/C bonds<sup>2</sup>.



Support the evaluation and re-purposing of rail systems and Regional Commuter Rail System to promote economic development with minimal disruption to current routes.



Support connecting employees and goods to job centers through high-capacity, and multimodal transportation systems inclusive of international, statewide, and multi-regional options.



Promote workplace, public, and enhanced statewide electric vehicle charging networks, contributing to improving air quality and economic development.



Support innovation in alternative modes of transportation and fuel sources through development, city code, zoning, and policy.



# Infrastructure

**Guiding Principle:** The Chandler Chamber of Commerce supports a transportation system that promotes economic growth and enhances quality of life. The Chamber advocates for economic development that encourages entrepreneurship, business attraction, retention, and expansion with an emphasis on local control.

## Key Issues:

**A.** Encourage innovative transportation solutions that strengthen local and regional infrastructure.

**B.** Support diverse funding sources at all levels.

**C.** Support local decision-making for zoning and land use that aligns with Chandler's mission, and encourages modernization, transparency, and community involvement.

**D.** Promote the continued development of cyber security and intellectual property protections to prepare for and defend against evolving threats.

## Footnotes:

---

*3. The I-11 would connect Mexico to the Hoover Dam, passing through Arizona rural communities.*

*4. Nodal transportation systems create ease of access for users and facilitation of supply chain processes through a multimodal transportation network that connects transportation hubs.*

## Position Statements

Local

State

Federal

Support the regional airport system as an economic development catalyst.



Support the extension of runways and raise the takeoff ceiling height to aid in noise reduction and promote safety at the Chandler Municipal Airport.



Support increased funding and development of the Airpark Area Plan to improve infrastructure and ensure long-term economic viability, while limiting residential encroachment on the Chandler Municipal Airport and Stellar Airpark.



Support continued collaboration with Mexican and Canadian trading partners through the proposed I-11<sup>3</sup> development, as well as other international trade routes and Arizona ports of entry.



Support the expansion of node transportation service<sup>4</sup>, allowing for operation throughout Chandler, providing the city with tangible data for return on assets.



Support fair, consistent regulations that enhance Chandler's walkability and bike-friendliness, ensure public safety, and allow for infrastructure upgrades without financial burden on businesses.



# Infrastructure

**Guiding Principle:** The Chandler Chamber of Commerce supports a transportation system that promotes economic growth and enhances quality of life. The Chamber advocates for economic development that encourages entrepreneurship, business attraction, retention, and expansion with an emphasis on local control.

## Key Issues:

**A.** Encourage innovative transportation solutions that strengthen local and regional infrastructure.

**B.** Support diverse funding sources at all levels.

**C.** Support local decision-making for zoning and land use that aligns with Chandler's mission, and encourages modernization, transparency, and community involvement.

**D.** Promote the continued development of cyber security and intellectual property protections to prepare for and defend against evolving threats.

## Footnotes:

---

*5. Alternatives include multi-use buildings, reuse of real estate, emphasizing walkable and intentional communities, soft amenities, and technologically innovative infrastructure that encourage increased density, redevelopment, reinvestment and adaptation.*

## Position Statements

Local

State

Federal

Support appropriate zoning and land use surrounding military installations and airports that advances the mission of those facilities and limits residential and non-residential.



Support increased collaboration and coordination between counties, municipalities, tribal communities, the State Land Department, and the Bureau of Land Management in local planning, land-use decisions, and property disposition timetables.



Support alternative methods of urban planning and infrastructure<sup>5</sup>.



Advocate for policy improvements that facilitate the completion of housing projects and strengthen local and regional economic development initiatives.



Supports increased broadband connectivity in the region to assist in growing development and adding information resources for residents.



Support a fiscally-responsible defense technology budget that protects national security while eliminating automatic over-cap budget reductions.



## Infrastructure

**Guiding Principle:** The Chandler Chamber of Commerce supports a transportation system that promotes economic growth and enhances quality of life. The Chamber advocates for economic development that encourages entrepreneurship, business attraction, retention, and expansion with an emphasis on local control.

**Key Issues:**

**A.** Encourage innovative transportation solutions that strengthen local and regional infrastructure.

**B.** Support diverse funding sources at all levels.

**C.** Support local decision-making for zoning and land use that aligns with Chandler's mission, and encourages modernization, transparency, and community involvement.

**D.** Promote the continued development of cyber security and intellectual property protections to prepare for and defend against evolving threats.

## Position Statements

Local

State

Federal

Support advanced technology and critical infrastructure to ensure Chandler and Arizona remain leaders in sustainable urban innovation.



Support programs that educate the business community on threat and liability awareness.



Supports strong international intellectual property protections and enforcement to ensure secure data transmission.



Support a collaborative framework for artificial intelligence to ensure responsible development, safeguard privacy, and promote innovation.



## Legal & Tax Policy

**Guiding Principle:** The Chandler Chamber of Commerce supports a federal, state, and local taxation system that reduces the burden on businesses, stimulates the economy and encourages capital investment. The Chamber supports reforms to reduce frivolous lawsuits.

### **Key Issues:**

**A.** Support a competitive tax environment for Arizona to compete nationally and globally, to attract cutting-edge, innovative industries, and maintain a strong and healthy business climate.

**B.** Support clear and concise tax laws that allow businesses to understand their liability without subjective agency interpretation.

## Position Statements

Local

State

Federal

Oppose overly prescriptive statutes and regulations, removing unreasonable regulatory and licensing barriers for businesses.



Protect businesses and ensure fair and equitable dispute resolution for all parties involved in litigation.



Support legal reform that allows appropriate compensation for substantiated damages for Arizona businesses.



Support legal reform that requires disclosure of third-party loans and caps interest rates on third-party litigation financing (TPLF).



Support tort reform that prohibits opportunities for contingency lawsuits brought by frivolous and unfounded claims in lawsuits.



Support employer's choice of the appropriate forum for the resolution of disputes and protect the enforceability of arbitration agreements.



Oppose accounting gimmicks and fund sweeps as budget balancing mechanisms, especially when related to transportation, infrastructure, and education.



## Legal & Tax Policy

**Guiding Principle:** The Chandler Chamber of Commerce supports a federal, state, and local taxation system that reduces the burden on businesses, stimulates the economy and encourages capital investment. The Chamber supports reforms to reduce frivolous lawsuits.

### Key Issues:

**A.** Support a competitive tax environment for Arizona to compete nationally and globally, to attract cutting-edge, innovative industries, and maintain a strong and healthy business climate.

**B.** Support clear and concise tax laws that allow businesses to understand their liability without subjective agency interpretation.

### Footnotes:

---

1. *Stranded tax credits are tax credits earned by a company but are unable to be used.*

2. *The Home Rule allows local municipalities to spend money collected from taxes rather than relying on the formula provided by the state.*

## Position Statements

Local

State

Federal

Support statutory clarification and consistency among states regarding taxation of digital goods and services to provide clarity and certainty to taxpayers.

Support the cohesion of tax codes across municipalities and the elimination of excessive codes and regulations.

Support policy that gives value to stranded tax credits<sup>1</sup> earned by companies investing in Arizona.

Support business protections from tax increases and current business tax credits and exemptions.

Support Home Rule<sup>2</sup> to limit the State's encroachment on local funding decisions.

Support modifications to the construction transaction privilege tax system that maintains state and municipal revenues, ensures local revenues are received at the construction location, and improves compliance within the industry.

Support a referendum that suspends automatic spending increases for voter-protected funds in a fiscal year when revenues do not meet projections.

## Legal & Tax Policy

**Guiding Principle:** The Chandler Chamber of Commerce supports a federal, state, and local taxation system that reduces the burden on businesses, stimulates the economy and encourages capital investment. The Chamber supports reforms to reduce frivolous lawsuits.

### **Key Issues:**

**A.** Support a competitive tax environment for Arizona to compete nationally and globally, to attract cutting-edge, innovative industries, and maintain a strong and healthy business climate.

**B.** Support clear and concise tax laws that allow businesses to understand their liability without subjective agency interpretation.

## Position Statements

Local

State

Federal

Support Arizona's research and development tax credit program to encourage industry innovation and ensure a globally competitive position.



Oppose changes in the formula that would reduce the percentage of state-shared revenues payable to cities and towns or repayment requirements back to the State.



Promote responsible public pension reforms to safeguard long-term sustainability while reducing costs for businesses.



# Chandler Chamber Board of Directors 2026



**Andrea Marconi**  
2026 Board Chair  
Fennemore Craig



**Terri Kimble**  
Chandler Chamber  
CEO/President



**Hilen Cruz**  
Immediate Past Board  
Chair  
Salt River Project



**Ashley Shick**  
2027 Incoming Board  
Chair  
Bashas' Family of Stores



**Richard Amoroso**  
Murphy Cordier  
Casale Axel PLC,  
Legal Council



**Kathleen Banister**  
AZ Key Realty



**John Bauer**  
Dignity Health  
Chandler Regional



**Heather Chasten**  
FALCO



**Elsa Chaviano**  
WaFD Bank



**Angela Creedon**  
Intel Coporation



**Scott Day**  
Northrop Grumman



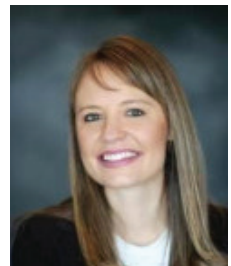
**Dr. Mike De La Torre**  
Chandler Unified School  
District



**Steve Greenhalgh**  
Arizona Pest  
Prevention



**Monica Greenman**  
Chandler  
Fashion Center



**Samantha Gulick**  
Harrah's Ak-Chin Hotel  
& Casino



**Kelly Harris**  
Air Products  
and Chemicals



**Morgan Hernke**  
Cox  
Communications



**Rick Heumann**  
CMA



**Kurt Johansen**  
Enterprise  
Bank & Trust



**Dan Kush**  
Consultant



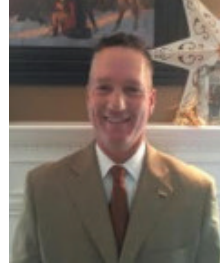
**Clark Landrum**  
Waste Management



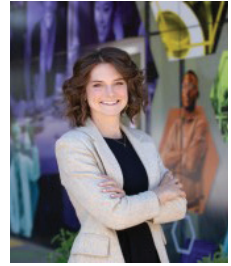
**Shelley Mayes**  
Banner Health



**Ryan Moyer**  
Gila River Resorts  
& Casinos



**Warde Nichols**  
Arizona State  
University



**Andrea Northup**  
Grand Canyon  
University



**Susan Perlman**  
Dogtopia of  
South Chandler



**Brian Peters**  
Toyota  
Financial Services



**Robert Pizorno**  
Attorney



**Robert Puller**  
Wells Fargo



**Sally Putnam**  
NOW Financial, CFP



**David Ralls**  
Commit Agency



**Delaney Russell**  
Southwest Gas



**Peter Sciacca**  
WGNSTAR



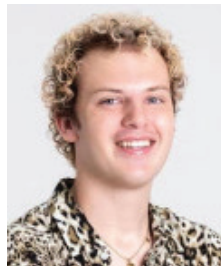
**Dunston Simpson**  
Encompass Tek



**Robert Sinkule**  
Yoga's Arc



**Seth Tucker**  
Price Mortgage



**Christian Weninger**  
NeverNotSocial



**Chuck Wolf**  
Caring Transitions



**Dr. CJ Wurster**  
Chandler-Gilbert  
Community College

## Ex-Officio Members



**Mayor Kevin Hartke**  
City of Chandler



**Mike McClanahan**  
St. Vincent de Paul  
Chandler Chamber  
Foundation Board



**Joan Saba**  
Saba's Western Wear  
Chandler Chamber  
Foundation Board

# Public School Districts

## Chandler Unified School District Governing Board



**Superintendent\***  
Frank Narducci



**Governing Board President**  
Patti Serrano  
*Term Ends: Dec 2026*



**Board Member**  
Ryan Heap  
*Term Ends: Dec 2028*



**Board Member**  
Claudia Mendoza  
*Term Ends: Dec 2028*



**Board Member**  
Barb Mozdzen  
*Term Ends: Dec 2028*



**Board Member**  
Kurt Rohrs  
*Term Ends: Dec 2026*

## Tempe Union High School District Governing Board



**Superintendent\***  
Dr. Stacia Wilson



**Governing Board President**  
Armando Montero  
*Term Ends: Dec 2028*



**Board Member**  
Andres Barraza  
*Term Ends: Dec 2026*



**Board Member**  
Berdette Hodge  
*Term Ends: Dec 2028*



**Board Member**  
Nicole Guitierrez Miller  
*Term Ends: Dec 2028*



**Board Member**  
Amanda Steele  
*Term Ends: Dec 2028*

\*District Superintendents are not elected officials

## Kyrene School District Governing Board



**Superintendent\***  
Laura Toenjes



**Governing Board President**  
Kevin Walsh  
*Term Ends: Dec 2026*



**Board Member**  
Cedric Collins Jr.  
*Term Ends: Dec 2028*



**Board Member**  
Ruth Davis  
*Term Ends: Dec 2028*



**Board Member**  
Trine Nelson  
*Term Ends: Dec 2026*



**Board Member**  
Amy Satre  
*Term Ends: Dec 2028*

## Mesa Public Schools Governing Board



**Superintendent\***  
Dr. Matt Strom



**Governing Board President**  
Courtney Davis  
*Term Ends: Dec 2028*



**Board Member**  
Sharon Benson  
*Term Ends: Dec 2028*



**Board Member**  
Lacy Chaffee  
*Term Ends: Dec 2028*

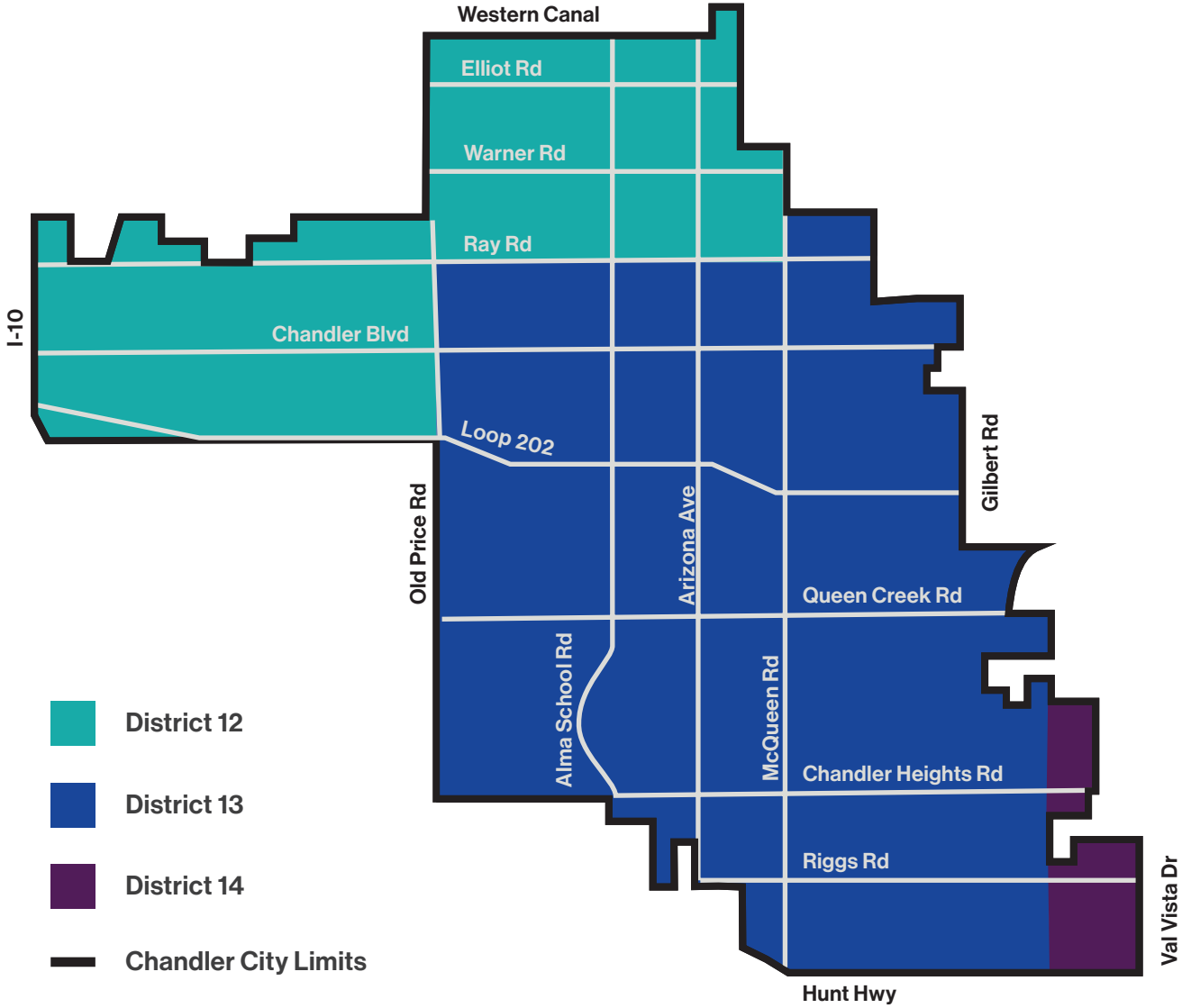


**Board Member**  
Marcie Hutchinson  
*Term Ends: Dec 2026*



**Board Member**  
Rachel Walden  
*Term Ends: Dec 2028*

# Chandler Legislative Districts Map



# State of Arizona Legislature

## Legislative District 12



**Senator**  
Mitzi Epstein (D)  
*Term Ends: Jan 2027*



**Representative**  
Patty Contreras (D)  
*Term Ends: Jan 2027*



**Representative**  
Stacey Travers (D)  
**House Minority Whip**  
*Term Ends: Jan 2027*

## Legislative District 13



**Senator**  
J.D. Mesnard (R)  
*Term Ends: Jan 2027*



**Representative**  
Jeff Weninger (R)  
*Term Ends: Jan 2027*



**Representative**  
Julie Willoughby (R)  
**House Majority Whip**  
*Term Ends: Jan 2027*

## Legislative District 14



**Senator**  
Warren Peterson (R)  
**Senate President**  
*Term Ends: Jan 2027*



**Representative**  
Laurin Hendrix (R)  
*Term Ends: Jan 2027*



**Representative**  
Khyll Powell (R)  
*Term Ends: Jan 2027*

# Elected Officials

---

## State of Arizona



**Governor**  
Katie Hobbs (D)  
*Term Ends: Jan 2027*



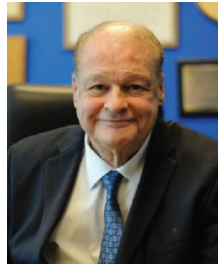
**Secretary of State**  
Adrian Fontes (D)  
*Term Ends: Jan 2027*



**Attorney General**  
Kris Mayes (D)  
*Term Ends: Jan 2027*



**State Treasurer**  
Kimberly Yee (R)  
*Term Ends: Jan 2027*



**Superintendent of Public Instruction**  
Tom Horne (R)  
*Term Ends: Jan 2027*

---

## Maricopa County



**Supervisor District #1**  
Mark Stewart (R)  
*Term Ends: Dec 31, 2028*



**Sheriff**  
Jerry Sheridan (R)  
*Term Ends: Dec 31, 2028*



**Attorney**  
Rachel Mitchell (R)  
*Term Ends: Dec 31, 2028*



**Recorder**  
Justin Heap (R)  
*Term Ends: Dec 31, 2024*



**Assessor**  
Eddie Cook (R)  
*Term Ends: Dec 31, 2024*

## Arizona Corporation Commission



**Commissioner**  
Rene Lopez (R)  
*Term Ends: Jan 2029*



**Commissioner**  
Lea Marquez-Peterson (R)  
*Term Ends: Jan 2029*



**Commissioner**  
Nicholas Myers (R)  
*Term Ends: Jan 2027*



**Commissioner**  
Kevin Thompson (R)  
*Term Ends: Jan 2027*



**Commissioner**  
Rachel Walden (R)  
*Term Ends: Jan 2029*

## United States



**US President**  
Donald Trump (R)  
*Term Ends: Jan 2029*



**US Senator**  
Mark Kelly (D)  
*Term Ends: Jan 2029*



**US Senator**  
Ruben Gallego (D)  
*Term Ends: Jan 2031*



**US Representative**  
Greg Stanton (D)  
**Congressional District 4**  
*Term Ends: Jan 2027*



**US Representative**  
Andy Biggs (R)  
**Congressional District 5**  
*Term Ends: Jan 2027*

# City of Chandler

Listed in alphabetical order

## Mayor & Council



**Mayor**  
Kevin Hartke  
*Term Ends: Jan 2027*



**Vice Mayor**  
Christine Ellis  
*Term Ends: Jan 2029*



**Councilmember**  
Jennifer Hawkins  
*Term Ends: Jan 2029*



**Councilmember**  
Angel Encinas  
*Term Ends: Jan 2027*



**Councilmember**  
Matt Orlando  
*Term Ends: Jan 2027*



**Councilmember**  
OD Harris  
*Term Ends: Jan 2029*



**Councilmember**  
Jane Poston  
*Term Ends: Jan 2027*

# How to Vote in Arizona

## Qualifications for Voting

To vote in the State of Arizona you must be a U.S. citizen, at least 18 years of age before the next election day, and a resident of Arizona and the current-listed county. A person in Arizona cannot vote if they are a convicted felon or have been deemed incapacitated by a state or federal court of law.

## How to Register in Arizona

Arizona residents may register by mail, online, or in-person through services including ADOT, vote.gov, and the Maricopa County Recorder's Office. To register, an Arizonan must provide proper state or federal I.D. along with their current residence. Registrations must be received by the county recorder at least 29 days prior to the next eligible election.

## Absentee/ Early Voting

Early voting in Arizona allows citizens to cast ballots by mail or in-person at voting centers prior to scheduled election days. Any Arizonan eligible to vote can register for early voting. In Arizona, absentee ballots must be requested 11 days before the next eligible election.

## Common Questions

### How do I update my registration?

A person should update their voter registration if they have changed addresses, especially if switching states, between elections, or having switched party affiliations. This should be done at least a month before the next eligible election. Voter registration can be updated online through Service Arizona, by mail, or in person with the County Recorder's Office.

### How can I vote in primaries?

Arizona has "semi-closed primaries" where-in persons registered to a political party can only vote in their own party's primary. However, unaffiliated voters may choose which party's primary they wish to vote in.

### What form of I.D. do I need to register to vote?

To register to vote, Arizonans can use US federal, state, or local government-issued IDs, Tribal enrollment cards, or two other forms including: utility bill, bank statement, valid AZ vehicle registration, AZ vehicle insurance card, property tax statement, or official mailing labeled as "official election material".

## Important Election Information

### Primary Election

Last Day to Register:  
**July 6th**

Election Date:  
**August 4th**

### General Election

Last Day to Register:  
**October 5th**

Election Date:  
**November 3rd**



# Contributors

## Elected Officials

Congressman  
Greg Stanton

Commissioner  
Rene Lopez

Commissioner  
Kevin Thompson

Senator  
Mitzi Epstein

Senator  
JD Mesnard

Representative  
Patti Contreras

Representative  
Stacey Travers

Representative  
Jeff Weninger

Representative  
Julie Willoughby

Maricopa County  
Supervisor  
Thomas Galvin

Maricopa County  
Supervisor  
Mark Stewart

County Attorney  
Rachel Mitchell

Mayor  
Kevin Hartke

Vice Mayor  
Christine Ellis

Councilmember  
Angel Encinas

Councilmember  
OD Harris

Councilmember  
Jennifer Hawkins

Councilmember  
Matt Orlando

Councilmember  
Jane Poston

Governing Board  
Member  
Patti Serrano

Governing Board  
Member  
Kurt Rohrs

## Contributors

Jane Anderson  
Racquel Armstrong

Lisa Askey  
Althea Baca

Fareed Bailey  
Kristin Balderas

Kathleen Banister  
Erica Barba

Ike Basha  
John Bauer

Adam Baugh  
Kenzie Berger

Kenneth Berstresser  
Lana Berry

Tom Blisten  
Crystal Blackwell

Sean Bowie  
Beth Brizel

Katie Burkey  
Amanda Caayon

Lorenzo Caballero  
Lisa Calderon

Cloves Campbell  
Patrick Carlson

Deidra Carr  
Erika Castro

Peppur Chambers  
Jennifer Cheap-Overall

Lisa Ciolli  
Daniel Coffman

Aaron Collette  
Joshua Cooper

Candice Copple  
Heather Cordova

Dr. William Crawford  
Lauren Crider

Lindsey Crooks  
Hilen Cruz

Bob Dalpe  
Andy Davis

April Davis  
Dana DeLong

Mehul Dhruva  
Mike Dippre

Patricia DiRoss  
Kyle Donkersloot

Tom Dorn  
Katy Drane

Marissa Duarte  
Matt Dunbar

Alan Eder  
Vaughn Emery

Carol Farabee  
Eric Fields

Vanessa Foden  
Perla Galaviz

Eileen Garces  
Anne Gardner

Sara Gitter  
Lisa Godzich

Norene Goldstone

Danielle Goodman

Julie Graham

Sean Gray

Matt Green

Monica Greenman

Shawn Halloran

Jeff Hamilton

Cynthia Hardy

Grace Hardy

Janet Hartkopf

Jane Hays

Helen Heiden

Jason Heinkel

Rebecca Heitkamp

Don Helton

Keith Henderson

Dylan Frye

Morgan Hernke

Rick Heumann

Ronald Huemoeller

Soledad Huitron

Vickie Hyde

Cara Isaac

Guy Jacques

Susan Janssen

Jarrett Jarrett-Hanover

Robert Jewett

Annika Jones

Michelle Kari

Dan Kaufmann

Ken Kawamoto

Crystal King

Paula Knight

Jeggy Krishnamurthy

Ajlan Kurdoglu

William LaVigne	Nick Padgett	Matt Shackley	Jamie Virtue
Julie Lazzara	Stephen Phair	Heidi Sharman	Joanne Vogt
Zach Lee	Robert Pizorno	Lori Sheets	Nicholas Vollrath
Beth Lewis	Jazmyne Plantillas	Ashley Shick	Joan Walmsley
John Lewis	Patricia Poe	Elizabeth Shipley	Susan Whitaker
Terry Locke	John Pombier	John Shrewsbury	Sarah White
Bianca Lopez	Marie Porter	David Sieck	Nicholas Wilkenson
Cheryl Marcom	Darla Proctor	Tiffany Silbergleigh	Harold Wong
Jon Martin	Zeyna Pruzhanovsky	Mike Simon	Mark Ybarra
Katie Martin	Sally Putnam	Kary Sinkule	Tiffany Young
George Martinez	Jordan Quintero	Kimberly Smieja	Britney Zink
Lisa Martinez	Murali Rajendran	Michael Smith	Superintendent
Mikayla Marshall	Manjula Reddy	Odette Smith	Frank Narducci
Kate Mayeski	Brandy Reese	Patrick Smith	
Erica McBeth	Emma Reyes	Janethe Smutny	
Denise McCreery	Sarah Richardson	Betty Ann Spadaro	
Christopher McMullan	Renee Richeson	Daniel Spitz	
Anne Medina-Doak	Renee Ricketts	Trennis Stanley	
Jane Meyer	Glen Riensche	Cherie Stone	
Pribly Michelle	Jordan Roan	Jeff Sussman	
Alexandra Miller	Jenay Roberts	Robert Sutton	
Les Minkus	Cicely Rocha-Miller	Stephanie Sutton	
Leslie Minkus	Bea Rocklin	Sam Szeto	
Yanneth Montes	Delaney Russell	Manny Tarango	
Mike Morales	Joan Saba	Isaac Thomas	
Brigette Murat	Jennifer Saba-Su	Christopher Tiller	
Sudha Narasimham	Dana Schiemann	Hal Timinsky	
Nashita Naureen	Taylor Schneck	Catrina Ulery	
Zachary Neeley	Janeen Scaringelli	Steven Valenty	
Nikkie Nguyen	Shelly Seitz	Vivian Valenty	
Warde Nichols			
Andrea Northup			
Destiny Nunez			
Magdalena Ornelas			
Orlando Orta			

---

*Listed are the individuals who have participated in the Chandler Chamber Public Policy efforts. Everyone listed provided input for the formulation of this document; this does not necessarily reflect their individual opinions, or that of the companies they work for.*



## Creating a stronger community, together.

Cox is proud to make meaningful partnerships throughout our communities.

Find out more at [cox.com](https://www.cox.com)

**COX**<sup>®</sup>  
Bringing us closer